



RX-PU 6290

World-class resin systems for floors,
manufactured and installed by Robex USA

ROBEX

www.robexusa.com



What is RX-PU 6290?

RX-PU 6290 is a prepared high strength polyurethane screed designed to withstand heavy duty use. It offers fantastic thermal shock resistance as well as incredible abrasion & chemical resistance.

Ideal for applications in industrial kitchens, heavy duty plants and traffic areas, breweries, food production facilities, processing plants etc.

It is recommended that the system be applied at between 6-9mm, depending on the application and site conditions. A site evaluation visit by one of our trained Site Managers is advised.

RX-PU 6290 offers the following features and benefits:

- **Withstands aggressive cleaning** including pressure washing and steam cleaning once it is fully cured.
- **Seamless finish** - ideal for use in industrial kitchens where there is high traffic and chemical resistance is required.
- **No grout or joints** to harbour dirt or bacteria, thus ensuring a safe and clean environment.
- **Virtually odour free** - ensures minimal disruption during application.
- **Protects against thermal shock** during use and cleaning process. Will not delaminate due to thermal shock stress. (-120°)
- **Monolithic system** - reduces the possibility of debonding between layers. Offers peace of mind to the client.
- **Nonslip system**, even when wet.
- **Impact resistant** - impact is absorbed across the system because of the seamless nature.

Chemical resistance

RX-PU 6290 has excellent resistance to a wide range of chemicals (further information available on request)

Chemical	Concentration	Result
Acids		
Hydrochloric	35%	✓
Nitric	30%	✓
Sulfuric	30%	✓
Phosphoric	80%	✓
Citric	40%	✓
Formic	50%	✓
Acetic	60%	✓
Lactic Acid	85%	✓
Chlorine Water	SAT'D	✓
Alkalis		
Ammonia Aqueous	30%	✓
Ammonia Hydroxide	30%	✓
Sodium Hydroxide	25% - 50%	✓
Amines		
Diethylenetriamine	100%	✓
Methyl Amine	40%	✓
Monomethyl Amine	100%	✓
Salts		
Aluminium Chloride	Below 50%	✓
Aluminium Sulfate	SAT'D	✓
Ammonium Nitrate	50%	✓
Calcium Chloride	50%	✓
Calcium Hypochlorite	SAT'D	✓
Calcium Nitrate	SAT'D	✓
Ferric Nitrate	SAT'D	✓
Hydrogen Peroxide	50%	✓
Nickel Chloride	SAT'D	✓
Nickel Sulfate	SAT'D	✓
Potassium Chloride	SA	✓

Chemical	Concentration	Result
T'D		
Potassium Peroxide	5%	✓
Sodium Hypochlorite	27%	✓
Sodium Peroxide	5%	✓
Zinc Chloride	50%	✓
Solvents	100%	✓
Acetone	100%	✓
Benzene	100%	✓
Chloroform	100%	✓
Dimethyl Formamide	100%	✓
Ethyl Acetate	100%	✓
Glycol Acetate	100%	✓
Methyl Ethyl Ketone	100%	✓
Toluene	100%	✓
Miscellaneous	100%	✓
Antifreeze	100%	✓
Beer	100%	✓
Castor Oil	100%	✓
Jet Fuel	100%	✓
Kerosene	100%	✓
Milk	100%	✓
Nitric Oxides	100%	✓
Quinine Sulfate	100%	✓
Steam	100%	✓
Urine	100%	✓
Vegetable Oil	100%	✓

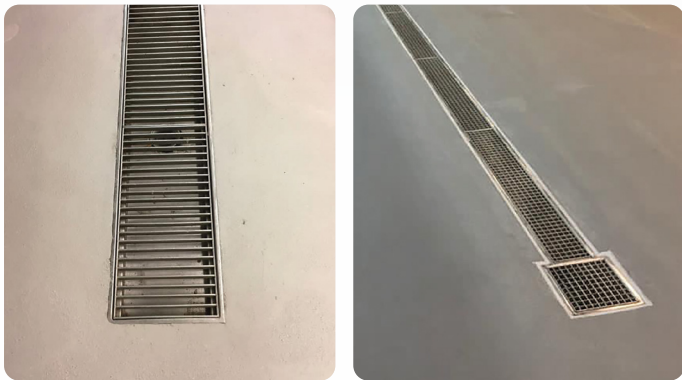
Non-slip qualities

RX-PU 6290 has excellent slip resistance in wet or dry conditions and has been independently tested as follows:

Direction	Condition	Pendulum test value					Median values		Slip risk classification
Principal	Dry	58	59	59	59	59	59	59	Low
45°	Dry	57	57	57	57	57	57	59	Low
90°	Dry	60	60	61	61	61	61	59	Low
Principal	Wet	48	47	47	47	47	47	47	Low
45°	Wet	49	49	49	48	48	49	47	Low
90°	Wet	49	48	47	47	47	47	47	Low

Drains and gulleys

Can be used effectively as a screed around damaged tiles and drains and gulleys. Because it is seamless, non-slip and completely waterproof, it is ideal for pot wash areas.



Coving

RX-PU 6290 can be used as a coving where required. The material can be installed at heights from 50-200mm which can be finished off with a stainless steel or plastic trim.



Curing times

	10°C	20°C	30°C
Light traffic	36 hrs	24 hrs	12 hrs
Full traffic	72 hrs	48 hrs	24 hrs
Full chemical cure	10 days	7 days	6 days

Temperature resistance

6mm	25°C to 100°C	77°F to 212°F
9mm	40°C to 120°C	104°F to 248°F



Application over tiles

RX-PU 6290 has excellent adhesion qualities and can be applied over most building surfaces. Although it is preferable to remove the existing tiles, it is possible to apply directly onto them if they have been correctly applied and are sound.

Substrate requirements

Concrete or screed substrate must be a minimum of 25N/mm², free from laitance, oil, dust and other contaminants. The substrate should be surface dry and free from rising damp and ground water pressure.

Aftercare and maintenance

Use a mildly alkaline detergent together with a single or double headed rotary scrubber/drier.

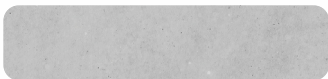




RX-PU 6290 Colour chart

Available in a wide variety of colours.

RX-PU 6290 is not colour fast and may "yellow" over time. Colour changes are dependent on UV light and heat levels at the time; hence the changes are unpredictable. These changes may be more evident in the lighter colours and blues. The changes will not have an impact on the product's chemical resistance or physical characteristics.



Light Grey



Mid Grey



Chelsea Blue



Safety Yellow



Pastel Orange



Robex Red



Industrial Green



Orange Peel

Contact us

Get in touch with our team for any enquiries:

info@robexusa.com

www.robexusa.com